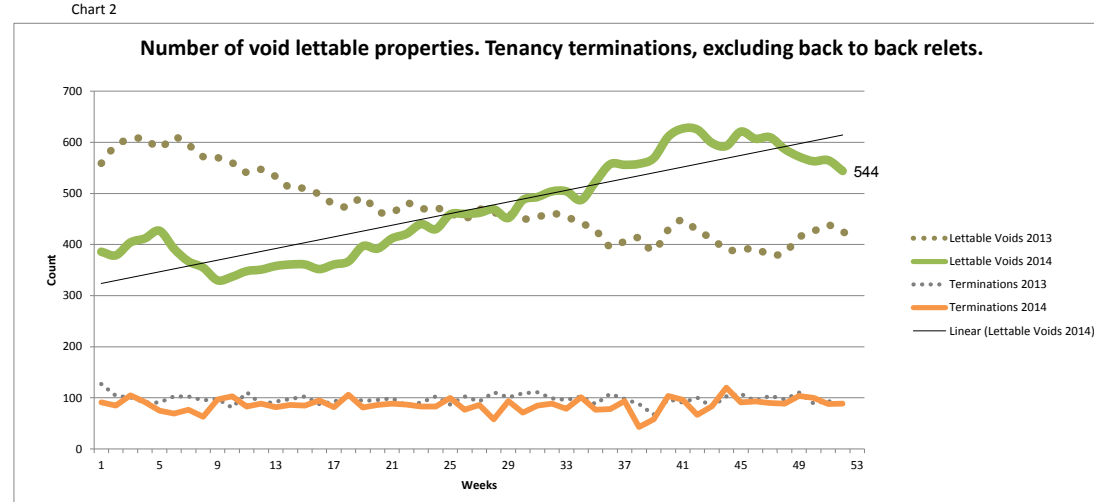
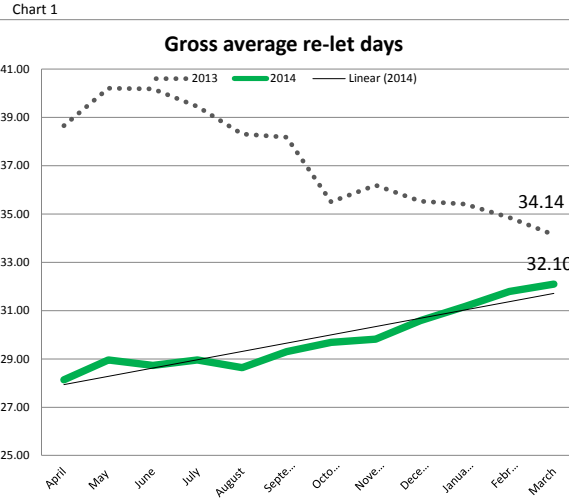


Housing Leeds Priorities, year end 2014/15
Top Level: City Wide

Priority 2: Void Dwellings



Commentary:

Chart 1: Average time to re-let

The overall average re-let time has reduced compared to last year, improving by 2.04 days, from 34.14 days to 32.10 days. However this year we have continued to see an increase in the average re-let time over the past few months. The time in works has continued to remain around 17/18 days. We currently have some performance concerns with the Asbestos contractors in East and action is being taken to address these concerns. We are also in the process of looking to streamline the 3 areas and develop one consistent procedure

Chart 2: Number of void properties

There are 129 additional voids due to PFI/ New Build/ Buy backs that will be discounted once let, this would leave 416 voids. Overall, void numbers continue to remain low and have reduced compared to 425 voids, last year,

2nd Level: Area/BITMO breakdown

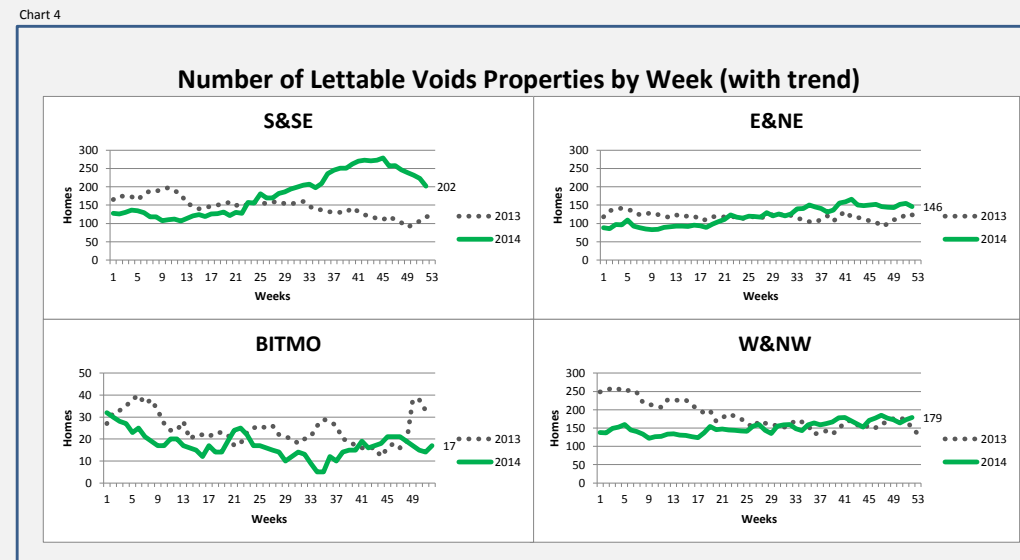
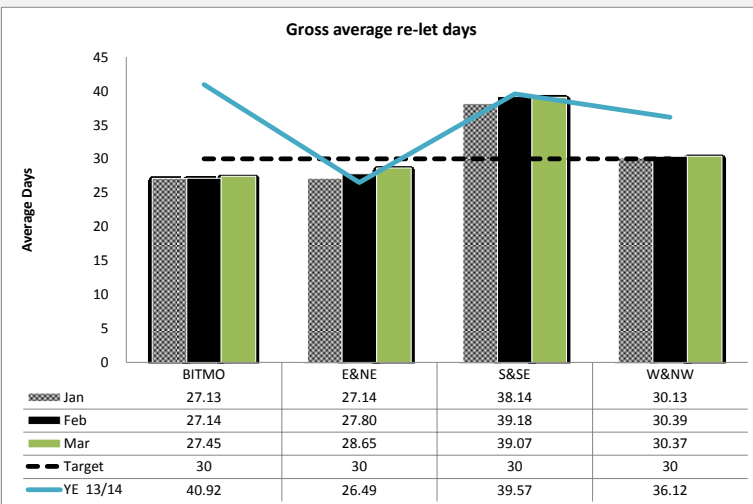


Table 5

	30 day Target Met		30 Day Target Unmet		Total No. Re-lets
CITY	2527	58%	1846	42%	4373
S&SE	511	43%	685	57%	1196
BITMO	136	67%	68	33%	204
E&NE	897	69%	411	31%	1308
W&NW	983	59%	682	41%	1665

3rd Level: Area/BITMO Statistics

Table 2
Rent Loss through voids (Cumulative £s)

2013	Jan	Feb	Mar
CITY	£1.49M	£1.57M	£1.71M
BITMO	£73.4K	£77.K	£88.9K
E&NE	£369.3K	£390.6K	£428.8K
S&SE	£469.9K	£492.7K	£529.2K
W&NW	£573.4K	£606.K	£660.9K

Table 3
Rent Loss Through Voids (Cumulative % of rent roll)

2013	Jan	Feb	Mar
CITY	0.83%	0.82%	0.81%
BITMO	1.21%	1.19%	1.24%
E&NE	0.63%	0.62%	0.62%
S&SE	0.99%	0.98%	0.95%
W&NW	0.87%	0.86%	0.85%

Table 2a
2014

	Jan	Feb	Mar
CITY	£1407.K	£1.59M	£1.79M
BITMO	£54.K	£59.6K	£65.4K
E&NE	£373.3K	£417.K	£470.5K
S&SE	£526.3K	£604.7K	£688.6K
W&NW	£453.4K	£503.8K	£568.K

Table 3a
2014

	Jan	Feb	Mar
CITY	0.79%	0.81%	0.81%
BITMO	0.88%	0.89%	0.89%
E&NE	0.68%	0.70%	0.70%
S&SE	1.01%	1.06%	1.06%
W&NW	0.69%	0.70%	0.70%

Table 4
Properties Void for more than 6 months

Area	Jan	Feb	Mar
City	4	3	2
BITMO	0	0	0
E&NE	2	0	0
S&SE	2	3	2
W&NW	0	0	0

